

DELAWARE STATE POLICE




GENERAL UPDATES AND UPCOMING TRAFFIC
SAFETY INITIATIVES

A collection of vintage police equipment including boots, a typewriter, a siren, and a sign for the State Highway Police.

From Humble Beginnings...

OVER 100 YEARS AGO THE STATE HIGHWAY POLICE WAS FORMED AND CONSISTED OF THE “FOUR HORSEMEN”, FOUR OFFICERS TASKED WITH MAINTAINING TRAFFIC SAFETY ALONG THE PHILADELPHIA PIKE NORTH OF THE CITY OF WILMINGTON.

TODAY

- 
- ▶ The modern-day Delaware State Police consists of over 1,000 employees, to include over 700 sworn Troopers.
 - ▶ As a full-service police agency, the Delaware State Police handles all types of criminal and traffic matters ranging from homicides to civil disputes.
 - ▶ In 2023, the Delaware State Police handled **293,283** calls for service.
 - ▶ Of those, **19,210** were non-animal-related collisions.

2023 STATISTICAL ANALYSIS

- What's working well:
 - In 2023 we observed a **1.3% reduction** in overall collisions.
 - an **11% reduction** in fatal collisions.
 - a **2% increase** in proactive DUI arrests.
 - a **14% increase** in proactive, distracted driving arrests.
 - and a **28% increase** in proactive occupant restraint arrests.

2023 STATISTICAL ANALYSIS

- Where we are hoping for improvement:
 - In 2023 we also observed a **15% increase** in pedestrian collisions.
 - and an **11% increase** in motorcycle collisions.
- ***The above annual totals amount to the worst annual totals in both categories since 2016.***

Holistic Approach

- ▶ Public Information Office
- ▶ Community Engagement Unit
- ▶ Partnerships
 - ▶ DeIDOT
 - ▶ OHS
 - ▶ MADD





**REAL TIME
CRIME
CENTER**

**TRAFFIC
ANALYSIS**

“HOT SPOTS” AND DIRECTED EFFORTS

UNCLASSIFIED//FOR OFFICIAL USE ONLY

Troop 9

414 Main Street, Odessa, DE 19730

Troop 9 Collision Heat Map



Troop 9 Traffic Hot Spot Collision Heat Map



Troop 9 Key Findings

- 5,454 total collisions occurring most frequently on southbound DuPont Parkway
- 40 fatal collisions with 9 (22% of 40) occurring within the Troop's traffic hot spot
- 914 personal injury collisions with 270 (29% of 914) of those occurring within the Troop's traffic hot spot
- Collisions by day of week occur most frequently on Friday (including and excluding animal related)
- Collisions by time of day occur most frequently between 1700—1800 hours and between 1600—1700 for those collisions excluding animal related

Troop 9 Traffic Hot Spots

Traffic Hot Spot Coverage Time: 150

SR-1/US-13 (Canal to N. Smyrna)

UNCLASSIFIED//FOR OFFICIAL USE ONLY



Delaware State Police Real Time Crime Center

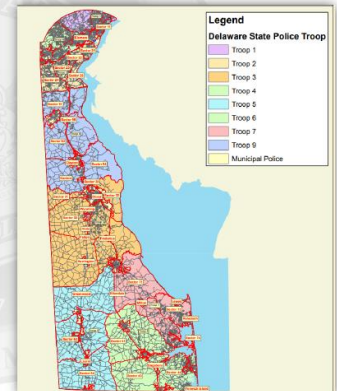
Delaware State Police Collision Analysis by Troop

Captain Joshua A. Boshwiler, Director • JAB@delaware.gov • Phone: (302) 739-5996 • Fax: (302) 739-1009

A collision analysis was requested by the Delaware State Police (DSP) Executive Staff regarding collisions that have occurred within each DSP Troop area. This study is intended to assist with deployment of the new DSP Highway Safety Unit (HSU). All e-crash collision data was extracted from CrimeView for the reporting period of January 1, 2021 through December 31, 2023. During this reporting period, DSP responded to 64,206 collisions. Of those, 9,574 (15%) were personal injury collisions, and 316 (0.49%) were fatal collisions. New Castle County (Troops 1, 2, 6, 9) accounted for 60% of collisions, while Kent/Sussex Counties (Troops 3, 4, 5, 7) accounted for 40%.

For each Troop, data is broken down by all collisions, fatal collisions, personal injury collisions, and then those collisions excluding animal related as a contributing factor. In addition, for each Troop area, Time of Day and Day of Week graphs were included and high frequencies were outlined.

Any questions regarding this study can be directed to Analyst Nicole Sapp at (302) 741—2754, or by email at Nicole.Sapp@delaware.gov.



Troop 1 Page 2	Troop 2 Page 7	Troop 3 Page 12	Troop 4 Page 17	Statewide Recap Page 42
Troop 5 Page 22	Troop 6 Page 27	Troop 7 Page 32	Troop 9 Page 37	

S.P.E.A.R.

(State Police Enhanced Analytical Response)

- Patrol Troop Administrators are monitoring collision and enforcement data daily and continuously formulating/assessing strategy.
- On a weekly basis the Patrol Commanders and their teams dialogue with the Operations Majors in the North and South to discuss these matters.
- Monthly, the Commanders present to the Colonel with regards to strategy and determinations are made related to necessary adjustments.
- The data utilized to make the ongoing, informed decisions related to deployment strategy come from the Real Time Crime Center.
- In many ways this approach ties to the reductions that have been achieved in many of the previously discussed statistical categories.





PATROL TROOPS

Patrol Troop Resources

- The State of Delaware is divided into eight (8) Troop areas each with its own command structure and compliment of Patrol Troopers.
- The efforts of the Patrol Troopers are directed by the Troop Administration who largely leverage data from the Real Time Crime Center.
- All Troops also have designated speed trailers which are typically deployed to areas of concern.
- Three Patrol Troops, Troops #2, #3 and #7 house each county's Collision Reconstruction Units.



Statewide Fatal Collision Recap

January 1, 2021—December 31, 2023



New Castle County	
Troop	Fatal
1	31
2	53
6	38
9	40
Total:	162

Kent County	
Troop	Fatal
3	61
Total:	61

Sussex County	
Troop	Fatal
4	31
5	38
7	24
Total:	93

Statewide Fatal Totals	
NCC	162
Kent/Sussex	154
Total:	316

TRAFFIC SECTION



Captain Michael Reader
Lieutenant Michael Wysock

Professional Staff Contributions

- **FARS Coordinator**
 - A single employee serves as our Fatal Accident Reporting System Coordinator with responsibility for inputting all fatal collisions into FARS.
- **Data Entry**
 - Two employees serve as our Data Entry Technicians with responsibility for ensuring data integrity of all collisions, court dispositions, and vehicle pursuits.
 - In 2023, the pair approved and released 19,834 collision reports.
- **Electronic Speed Enforcement**
 - A single employee serves as our Electronic Speed Monitoring Program Technician and oversaw the 'Restore the Corridor' speed enforcement initiative.
- **Traffic Signal Enforcement**
 - Three former police officers serve as our Traffic Signal Enforcement Technicians.
 - During 2023 they processed 55,394 red light violations stemming from 88 cameras covering 35 intersections.
 - The trio amassed a 100% conviction rate in 169 court appearances!



MOTORCYCLE UNIT

Commercial Motor Vehicle Enforcement Unit (CMVEU)

2023 STATISTICS:

- ▶ Scanned 351,511 commercial vehicles utilizing WIMS.
- ▶ Physically weighed over 15,000 vehicles at weigh stations.
- ▶ Weighed 445 vehicles utilizing portable scales.
- ▶ Made over 1,000 arrests for size and/or weight violations.
- ▶ Inspected 6,960 commercial vehicles.
- ▶ Conducted 590 compliance audits of companies possessing DOT numbers.
- ▶ Issued over 3,000 commercial vehicles citations with 50% being for dangerous moving violations.
- ▶ Cited 589 non-CMV operators for dangerous moving violations.



WORKING GROUPS & INITIATIVES

- ▶ **Teen Driver Task Force** (OHS/DeIDOT/DOE/DATE)
- ▶ **Motorcyclist Safety Working Group** (OHS/DeIDOT/DMV)
- ▶ **Impaired Driving Prevention Task Force** (OHS/DeIDOT/DOJ/NHSTA)
- ▶ **Fatal Crash Review Panel** (OHS/DeIDOT)
- ▶ **Drive to Save Lives**
- ▶ **OHS-Funded Initiatives**
- ▶ **Speed Exhibition Takeover Events**

A graphic for the Delaware State Police Highway Safety Unit. At the top, a blue banner with white text reads "DELAWARE STATE POLICE". Below this, two large, stylized figures of troopers in uniform and helmets are shown in silhouette against a bright, glowing background. In the foreground, a red Delaware State Trooper patrol car is visible, with its emergency lights flashing. At the bottom, a row of five troopers in uniform stands with their arms crossed. The background features large, faint numbers "1213".

DELAWARE

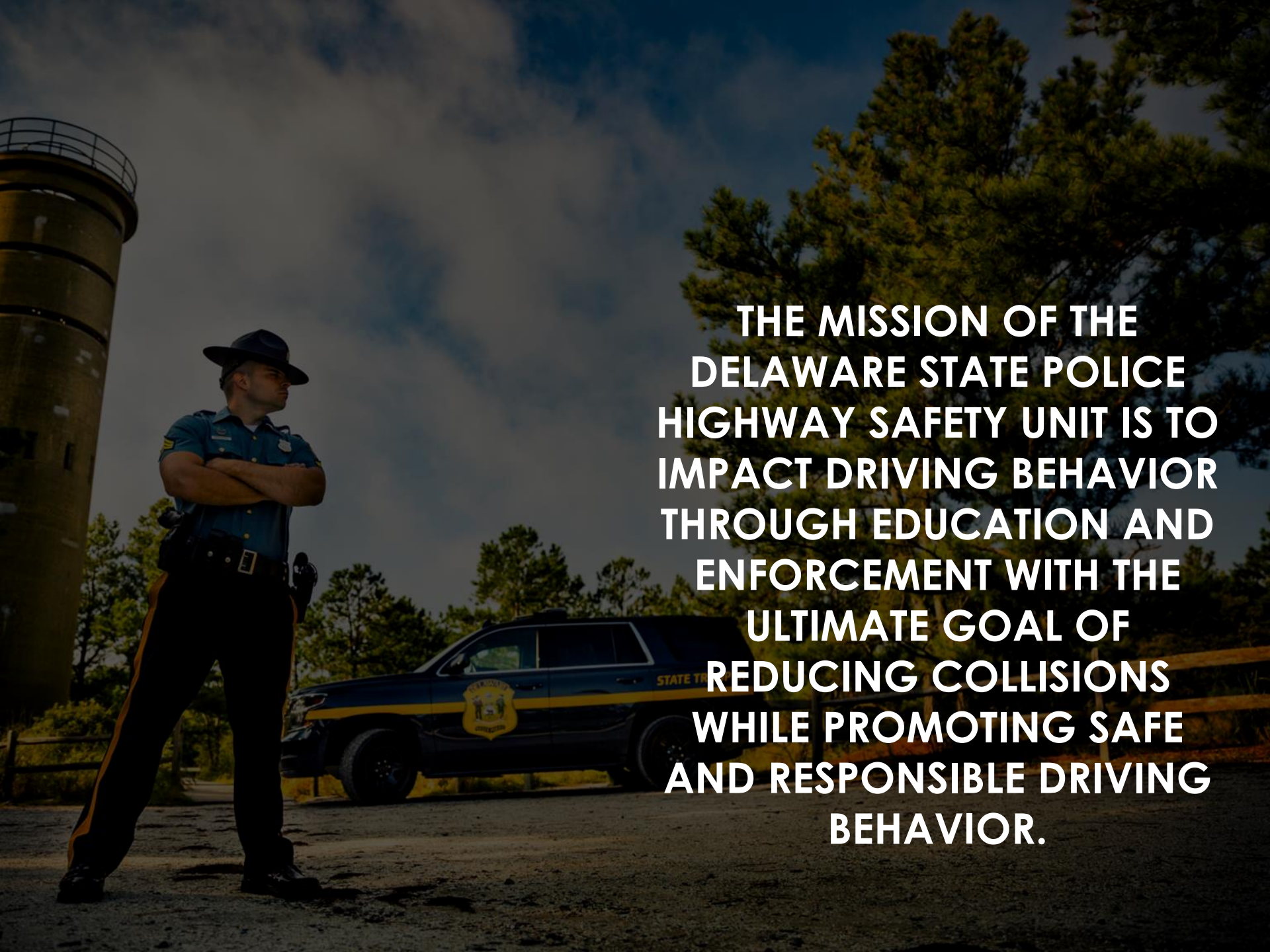
STATE POLICE

Highway Safety Unit

(The artist formerly known as HTSEU)

- ▶ Sgt. Mike McCann
- ▶ 10 Troopers
- ▶ 1 Mission

Focused enforcement on “high-intensity” roadways such as I-95, I-495, I-295 and State Route 1.

A Delaware State Police officer in uniform stands with arms crossed on a paved area. In the background, a blue Delaware State Trooper patrol car is parked. To the left, a tall, cylindrical stone tower with a metal railing on top is visible. The scene is set outdoors with trees and a clear sky.

**THE MISSION OF THE
DELAWARE STATE POLICE
HIGHWAY SAFETY UNIT IS TO
IMPACT DRIVING BEHAVIOR
THROUGH EDUCATION AND
ENFORCEMENT WITH THE
ULTIMATE GOAL OF
REDUCING COLLISIONS
WHILE PROMOTING SAFE
AND RESPONSIBLE DRIVING
BEHAVIOR.**

A large, faint watermark of the Delaware State Police logo is centered in the background. The logo is diamond-shaped and contains the text 'DELAWARE STATE POLICE' around the perimeter and a central crest with two figures and a ship.

QUESTIONS?

HONOR / INTEGRITY / COURAGE

LOYALTY / ATTITUDE / DISCIPLINE / SERVICE